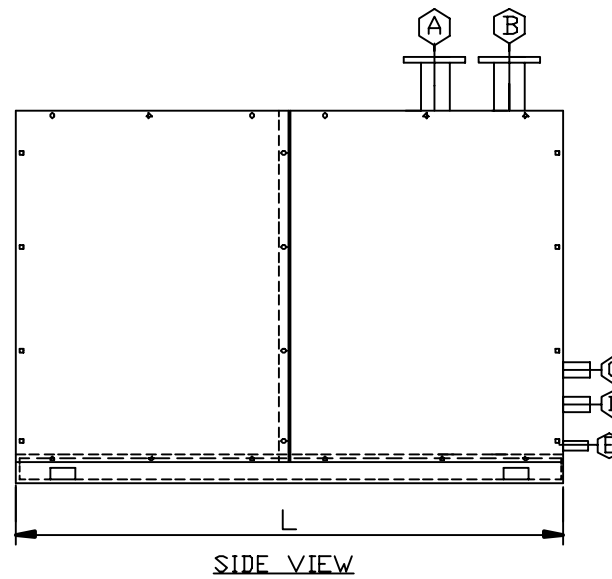
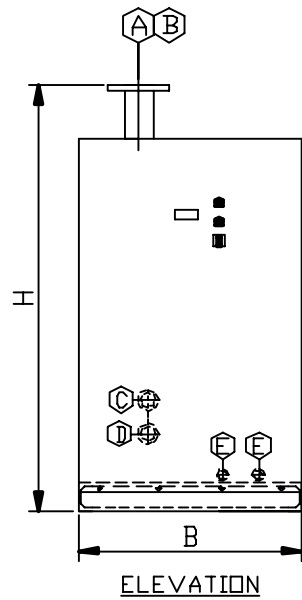


NOZZLE SCHEDULE	
MARK	SERVICE
A	AIR INLET CONN.
B	AIR OUTLET CONN.
C	WATER INLET CONN.
D	WATER OUTLET CONN.
E	DRAIN CONN.



Specifications

Model	Capacity CFM	Dimension L x B x H (Inches)	Air Connection (Inches)	Water Connection (Inches) (For Water Cooled Models Only)	C.W. Req'd. lpm	Approx. Weight kgs	Power Consumption KW/HR	Compressor	
								Hermatic	or Open
CAA/W-5	50	40 x 20 x 40	3/4" BSP COUP.	1/2" BSP COUP.	-	95	0.38	1no.	-
CAA/W-7	75	40 x 20 x 40	3/4" BSP COUP.	1/2" BSP COUP.	-	105	0.38	1no.	-
CAA/W-10	100	42 x 24 x 43	1 1/2" ASA150#FLG.	3/4" BSP COUP.	7	160	0.57	1no.	-
CAA/W-15	150	42 x 24 x 43	1 1/2" ASA150#FLG.	3/4" BSP COUP.	9	175	0.79	1no.	-
CAW-20	200	42 x 24 x 48	2" ASA150#FLG.	1" ASA150#FLG.	14	240	0.96	1no.	-
CAW-25	250	42 x 24 x 48	2" ASA150#FLG.	1" ASA150#FLG.	16	250	1.21	1no.	-
CAW-30	300	42 x 24 x 48	2" ASA150#FLG.	1" ASA150#FLG.	18	260	1.45	1no.	-
CAW-40	400	66 x 27 x 51.5	3" ASA150#FLG.	1" ASA150#FLG.	23	425	1.93	1no.	-
CAW-50	500	66 x 27 x 51.5	3" ASA150#FLG.	1" ASA150#FLG.	30	450	2.42	1no.	-
CAW-65	650	54 x 30 x 55.5	3" ASA150#FLG.	1" ASA150#FLG.	37	730	3.14	1no.	-
CAW-75	750	54 x 30 x 55.5	3" ASA150#FLG.	1" ASA150#FLG.	45	750	3.63	1no.	-
CAW-85	850	66 x 33 x 58.5	4" ASA150#FLG.	1" ASA150#FLG.	50	950	4.11	1no.	-
CAW-100	1000	66 x 33 x 58.5	4" ASA150#FLG.	1" ASA150#FLG.	57	975	4.84	1no.	-
CAW-120	1200	66 x 36 x 65	4" ASA150#FLG.	1 1/2" ASA150#FLG.	68	1050	5.80	1no.	-
CAW-150	1500	78 x 36 x 65	4" ASA150#FLG.	1 1/2" ASA150#FLG.	85	1250	7.26	1no.	-
CAW-180	1800	90 x 36 x 65	6" ASA150#FLG.	1 1/2" ASA150#FLG.	102	1500	8.71	1no.	-
CAW-200	2000	78 x 40 x 71	6" ASA150#FLG.	1 1/2" ASA150#FLG.	115	1600	9.68	1no.	-
CAW-250	2500	88 x 40 x 71	8" ASA150#FLG.	2" ASA150#FLG.	140	2000	12.10	1no.	-
CAW-300	3000	100 x 48 x 80	8" ASA150#FLG.	2" ASA150#FLG.	170	2500	14.52	2nos.	1no.
CAW-350	3500	100 x 48 x 80	8" ASA150#FLG.	2" ASA150#FLG.	185	2600	16.94	2nos.	1no.
CAW-400	4000	100 x 54 x 80	8" ASA150#FLG.	2" ASA150#FLG.	200	3100	19.36	2nos.	1no.
CAW-500	5000	126 x 54 x 84	10" ASA150#FLG.	2" ASA150#FLG.	260	3900	24.20	2nos.	1no.

Model : CAA-5 to CAW-30 Dryers available in 220Volts / 1 Phase / 50 Hz supply.

Other models are available in 440 Volts / 3 Phase / 50 Hz supply.

Capacity specified is at Inlet Air Temperature of 45°C.

Inlet Air Pressure of 100 Psig.

Ambient Temperature of 43°C.

**Model : CAAW-5 to CAAW-15 &
Model : CAW-20 to CAW-500**

PURIFLAIR INDIA PVT. LTD.

22, GIDC, MAKARPURA, BARODA-10.

DATE	03.01.04		
SIGN.			
	DRN.	CHKD.	APPD.

Std. of Ref. Dryer